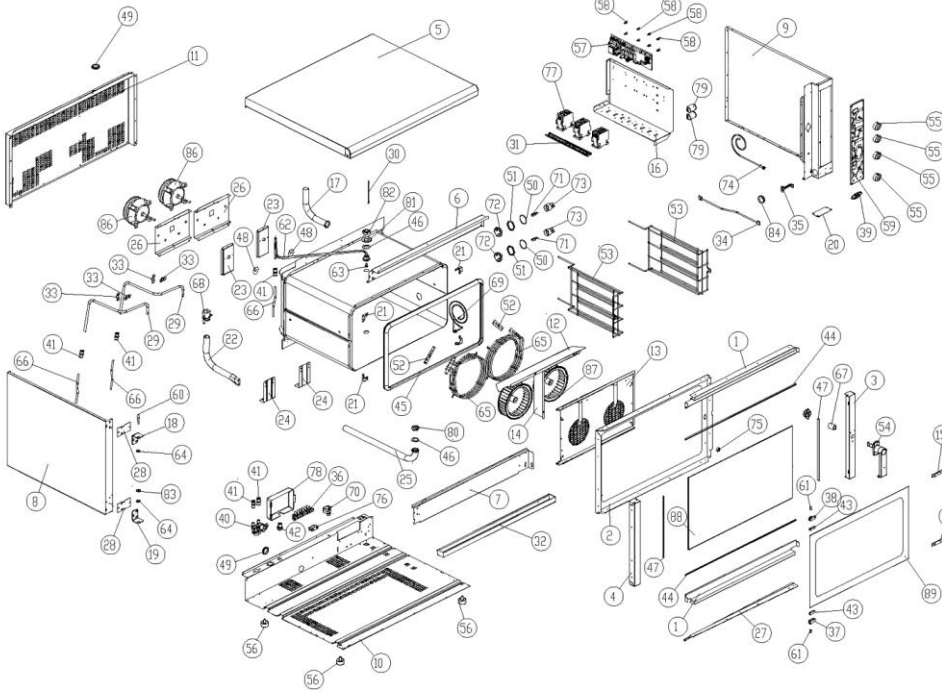


MOD: XB403

EXPLODED VIEW DISEGNO ESPLOSO



LEGEND - LEGENDA

1	0B100A1	55	PD061A
2	0B103A1	57	PE101B1
3	0B103A1	58	PE102
4	0B104A0	59	PE105S80
5	0D100B0	60	RC103SA0
6	0D100A2	61	RC100B0
7	0D101A1	62	RC113SA0
8	0D102B0	63	RC114SA0
9	0D102B0	64	RC540
10	0E100C1	65	RS104A0
11	0F100C0	66	TR028
12	0G100S81	67	TR100S40
13	0G101A4	68	TR100S40
14	0G105S80	69	TR100S42
15	2H032	70	TR2558
16	0H100S40	71	VE100S41
17	0H101A0	72	VE101A0
18	0H102A0	73	VE101A0
19	0H102A0	74	VE102A0
20	0H103A2	75	VE103A1
21	0H104A0	76	VE107A0
22	0H105A1	77	VE109S40
23	0H106A0	78	VE100A0
24	0H106A0	79	VE221
25	0H107A0	80	VN103A2
26	0H108A0	81	VN123A0
27	0H100A3	82	VN124A0
28	0H110A2	83	V524
29	0H150A0	84	VN100S40
30	0H100A0	85	VN100S40
31	0H180A0	87	VN102S40
32	0M100A2	88	VT101A0
33	2H070	89	VT101A0
34	CE100C0		
35	CE100S80		
36	CE212		
37	CR045		
38	CR046		
39	ED107A0		
40	EL100A0		
41	EL105A0		
42	EL125A0		
43	GN006A		
44	GN100		
45	GN100B0		
46	GN101A0		
47	GN102		
48	GN114A0		
49	GN104A0		
50	GN105A0		
51	GN106A0		
52	GN224		
53	GR100A0		
54	MG100A0		
55	MN121A		

20/05/2005

serial number: 700

1 / 2

MOD: XB403

EXPLODED VIEW DISEGNO ESPLOSO



DESCRIZIONE CODICI

1	0B100A1	LIBELLO SUPPLN PORTA INOX SERIE XB
2	0B103A1	PORTA INTERNA INOX XB403
3	0B103A1	COLONNINA LATERALE SX INOX XB403 XV033/303
4	0B104A0	COLONNINA LATERALE SX INOX XB403 XV033/303
5	0D100B0	COPERCHIO INOX SERIE XB
6	0D101A2	PROFILO SUP INOX FACCIATA MULTIFLUA XB803
7	0D101A1	PROFILO INF INOX FACCIATA MULTIFLUA XB803
8	0D102B0	FIANCO SX INOX XB403
9	0D102B0	FIANCO DX INOX XB403
10	0E100C1	FONDO ESERNO INOX XB403/GN006A/G
11	0F100C0	SCHEMA INOX XB403
12	0G100S81	DISC. CARRIER ARIA INOX XBAND SERIE XB
13	0G101A4	CARRIER ARIA INOX X53E2
14	0G105S80	DAV. VERI CARRIER ARIA INOX XB403/G
15	2H032	LAMIERA TERMA PORTA FREDDA LAVAGIO
16	0H100S40	LAMPADINA PORTA/ESPANSIONE
17	0H101A0	GAMBO FLUVA INOX STANDARD
18	0H102A0	STAFIA SUP. LAMPADINA
19	0H102A0	STAFIA INF. PORTA SUP. PORTA
20	0H103A2	BAPPO INF. CHUSURA CHUSOCOTTE
21	0H104A0	ANVILLO INOX FACCIATA MULTIFLUA STAND
22	0H105A1	RUBO VENTURI STANDARD
23	0H106A0	NUOVO SUPPORTO PERSIAPORRA/ZINCATO
24	0H106A0	NUOVO SOSTEGNO NUOVA LINEA STAND
25	0H107A0	RUBO SCARICO INOX X53E3
26	0H107A0	PROFILO ROZDOLNO MOTOR XB403 XV033
27	0H110A3	PROF. SALVA GOCCIA INOX SERIE XB
28	0H110A2	CONTRORAFIA PORTA XB-XV-XV
29	0H150A0	RUBO EST LUMINER NUOVA LINEA STAND
30	0H165A0	RUBO COPRI RUBO TERMOISOLANTE DI SIC
31	0H180A0	SARSA ZMT ONDEGA PORTA
32	0M100A2	GASSETTO/RACCOLTA GOCCIE
33	2H070	PROFILO FERMA RUBO LUMINER LAVAGIO
34	CE100C0	CAVO COIL. SCHEDE POC-CONTR 4 FILI VERI 2003/L1 C5A CON
35	CE100S80	CAVO COIL. SCHEDE CON-ITL D8V1 3X12 VERI 2003
36	CE212	MOSETTE SVOCT9A ON VO 0016093
37	CR045	CERN DX INOX XV-XL-XB
38	CR046	CERN SX INOX XI-XL-XB
39	ED107A0	ELETTRICITA' UNOX LUSSE 78x33 ARGENTO CON BORDO EST
40	EL100A0	ELETTRICITA' UNOX LUSSE 78x33 ARGENTO CON BORDO INT.
41	EL105A0	REDUZIONE I.D. DA 24x24 A 24x18 PIRE008E
42	EL125A0	PASSAPORTE 08
43	GN006A	GLIARI PORTA FREDDA A BANDA. PIRE CAB/CAPS 52x1mm
44	GN100	PROFILO PORTA INOX P946 XT
45	GN100B0	GLIARIZIONE NERO 50 P. SPORTE FORNI XB-X3-XV
46	GN101A0	GLIAR. PIRE-CARE NUOVO SCARICO #2x2x3.5x2
47	GN102	PROFILO PORTA NERO C12 XT
48	GN114A0	GLIARIZIONE PORTA/MOTORORE STAMP. ALBERO INOX D10 XB-X
49	GN104A0	GLIAR. ANTIFURTO. CARRICO-SCARICO #31-#43 9-5pa7.5
50	GN105A0	GLIAR. ANTIFURTO. CARRICO-SCARICO #31-#43 9-5pa7.5
51	GN106A0	GLIAR. PIRE-CARE NUOVO SCARICO #2x2x3.5x2
52	GN224	GLIAR. PIRE-CARE 100x220.8ap-c/for 1199
53	GR100A0	GRIGLIA LAT. INOX PASTICCERIA 4RS
54	MG100A0	RUOTA MANIGLIA STANDARD
55	MN121A	MANIGLIA CON CONDIZIONE SERRAFRANCO 14

DESCRIPTION

1	0B100A1	ENG-LIBELLO SUPPLN PORTA INOX SERIE XB
2	0B103A1	ENG-PORTA INTERNA INOX XB403
3	0B103A1	ENG-PORTA INTERNA INOX XB403
4	0B104A0	ENG-PORTA INTERNA LATERAL COLUMN XB403 XV033/303
5	0D100B0	ENG-PORTA INTERNA COVER SERIE XB
6	0D101A2	ENG-PROFILO INF INOX FACCIATA MULTIFLUA XB803
7	0D101A1	ENG-PROFILO INF INOX FACCIATA MULTIFLUA XB803
8	0D102B0	
9	0D102B0	
10	0E100C1	
11	0F100C0	
12	0G100S81	
13	0G101A4	
14	0G105S80	
15	2H032	ENG-WASHED METAL HOLDER FOR COOL DOOR
16	0H100S40	ENG-COMPONENT BRASSER SERIE HOLDER
17	0H101A0	ENG-STANDARD STAINLESS STEEL FLAME CHIMNEY
18	0H102A0	ENG-UPPER BRACKET TO HOLD THE DOOR
19	0H102A0	ENG-LOWER BRACKET TO HOLD THE DOOR
20	0H103A2	ENG-BOTTOM LID TO CLOSE CONTROL PANEL
21	0H104A0	ENG-STAINLESS STEEL STANDARD CORNER OF FRONT PART OF CAVITY
22	0H105A1	ENG-STANDARD VENTURI RUBE
23	0H106A0	ENG-NEW ZINCO SUPPORT TO PUSH MOTORS
24	0H106A0	ENG-NEW STANDARD CAVITY SUPPORT
25	0H107A0	ENG-BAPPO SUPPLN INOX XB403
26	0H107A0	ENG-PROFILO TO HOLD RUBO INOX XB403 XV033
27	0H110A3	
28	0H110A2	ENG-DOOR COLUMN BRASSER UP XB-XV-XV
29	0H150A0	ENG-EXTERNAL HUMIDITY RUBE NEW LINE STAND
30	0H165A0	ENG-RUBO COPRI RUBO TERMOISOLANTE DI SIC
31	0H180A0	
32	0M100A2	ENG-DRIP TRAY
33	2H070	ENG-WASHED PROFILE TO HOLD HUMIDITY RUBE
34	CE100C0	ENG-CONNECTION CABLE POWER - CONTROL. CAPD 4 WIRES VERI 20
35	CE100S80	ENG-CONNECTION CABLE CONTROL-CONTRIT D8V1 3X12 VERI 20
36	CE212	ENG-TERMINAL BOARD
37	CR045	ENG-RIGHT STAINLESS STEEL HINGE XV-XL-XB
38	CR046	ENG-LEFT STAINLESS STEEL HINGE XV-XL-XB
39	ED107A0	ENG-UNOX ELECTRICAL SWITCH 78x33-SERVO WITH EXTERNAL FRAME
40	EL100A0	ENG-WATER DOUBLE ELECTRICAL SWITCH WITH 23.0 CONN. INOX. W/ RED COIL
41	EL105A0	ENG-I.S. REDUCTION FROM 24x24 TO 24x18 PIRE008E
42	EL125A0	ENG-WALL PRESSING SW 08
43	GN006A	ENG-COLD DOOR SEAL PIRE CAB/CAPS 52x1mm
44	GN100	ENG-DOOR BLACK SEAL P946 XT
45	GN100B0	ENG-BLACK DOOR SEAL 50 P. SPORTE CHIMNEY XB-X3-XV
46	GN101A0	ENG-SEAL PIRE-CARE NEW DRAWN #2x2x3.5x2
47	GN102	ENG-BLACK SILICON DOOR PROFILE C12 XT
48	GN114A0	ENG-MOTOR GASKET
49	GN104A0	ENG-ANTIFURTO-SEA FOR DOUBLE CHIMNEY #31-#43 9-5pa7.5
50	GN105A0	ENG-ANTIFURTO-SEA FOR DOUBLE CHIMNEY #31-#43 9-5pa7.5
51	GN106A0	ENG-SEAL FOR LAMP GLASS COVER FEDER VIGORON PIRE #2x2x3.5x2
52	GN224	ENG-PIRE-CARE 100x220.8ap-c/for 1199 GASKET
53	GR100A0	ENG-STAINLESS STEEL LATERAL SUPPORT 4 TRAYS 400x400
54	MG100A0	ENG-NON STANDARD HANDLE
55	MN121A	ENG-KNOB WITH NON SERROGRAPHED INOX 04

20/05/2005

serial number: 700

2 / 2